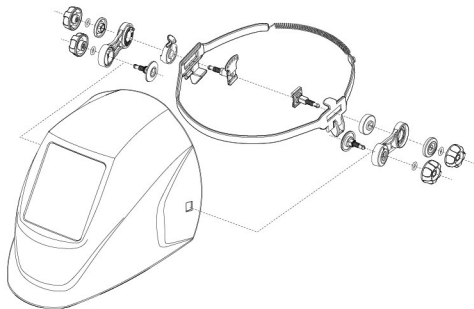
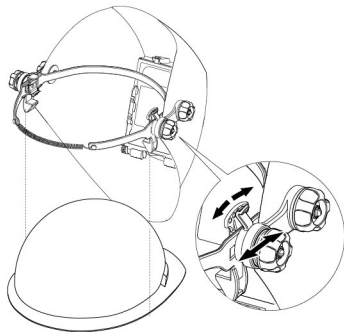


# ***EXTENDIBLE ADAPTER INSTALLATION MANUAL***

This adapter used for safety hat which could be fixed with spring



Step 1: As is shown above , pls install the adapter to the welding mask firstly.



Step 2: Put the adapter on the safety hat and fasten it.

The position of adjusting distance between the helmet and the face is located on both sides of the adapter.

The position of adjusting the view angel is located to the right of the adapter.